



1966 Hinckley 41

Boat Type: Sloop

Address: Portsmouth, RI, US

Price: \$124,900



OVERVIEW

In the water for the 2018 season and ready to go!

The Hinckley name is obviously synonymous with quality. The Hinckley 41 is another example of that quality both in construction and workmanship as well as performance. The Hinckley 41 was originally available in a standard full keel configuration as well as a "Competition" version with a spade rudder. This particular boat is a hybrid of both with the spade rudder which adds to her performance. If you've been looking for a Hinckley Bermuda 40, come see the Hinckley 41 for a better performing yacht.

She is complete with a new (2006) Westerbeke inboard diesel engine now with just over 1200 hours, new (2004) mast and recently (2011-2012) updated electronics. The boat has been loving and professionally cared for and wants for nothing. Come see this classic beauty. She is in the water and cruising southern New England as speak.

SPECIFICATIONS

Basic Information

Manufacturer:	Hinckley	Vessel Name:	Calypso
Model:	41	Boat Type:	Sloop
Year:	1966	Hull Material:	Fiberglass
Category:	Sail	Hull Type:	
Condition:	Used	Hull Color:	
Location:	Portsmouth, RI, US	Designer:	
Flag of Registry:			

Dimensions & Weight

Length:	41 ft - 12.5 meter	Draft - max:	6 ft 1 in - 1.85 meter
LOA:	135 ft - 41.15 meter	Bridge Clearance:	-
Beam:	10 ft 2 in - 3.1 meter	Dry Weight:	18500 ft - 5638.8 meter

Engine

Make:	Westerbeke	Engine Type:	Inboard
Model:	44B-4	Drive Type:	Direct Drive
Engine(s):	1	Fuel Type:	Diesel
Hours:	1203	Horsepower:	44 (Individual), 44 (combined)
Cruise Speed:	8 MPH	Max Speed:	-
Range:	-	Joystick Control:	No

Tank Capacities

Fuel Tank:	40 gallons - 1 tank(s)	Holding Tank:	-
Fresh Water Tank:	100 gallons - 1 tank(s)		

Accommodations

Total Cabins:	1	Crew Cabins:	-
Total Berths:	1	Crew Berths:	-
Total Sleeps:	-	Crew Sleeps:	-
Total Heads:	1	Crew Heads:	-
Captains Cabin:	No		

DESCRIPTIONS

Updates and Refits

2017

- New engine start battery
- Force 10 3-burner stove with oven with custom cabinetry
- All new propane hoses, solenoid, etc
- New cutlass bearing
- Stuffing box repacked

2016

- Vacuflush head refit with new duckbill valves and premium Shields black water hoses

2012

- New Raymarine autopilot motor and drive
- New anemometer and display (wind speed/direction)
- New refrigeration compressor
- New Sur Flo water pump
- New Freedom 1000 watt inverter/charger
- Replaced steering cables and clamps
- Updated interior paint

2011

- Deck painted
- New Raymarine X10 Core Pack autopilot
- New Raymarine ST6002 autopilot display
- New ICOM M802 SSB radio
- New Standard Horizon Matrix GX2100 VHF/AIS
- New Jensen satellite stereo/CD player with cockpit speakers
- New Galaxy satellite antennae
- New CQR 35lb stainless anchor
- New Xantrex Linklite battery monitor
- New hatch, winch and pedestal covers
- New Raystar 120 GPS

2007

- Bottom stripped and Interprotect barrier coat installed

2006

- New Westerbeke engine and transmission
- New engine compartment insulation and ventilation system
- New automatic fire suppression system
- New cockpit pedestal and steering controls
- New inner forestay
- New high water bilge alarm
- New Lewmar anchor windlass
- Fuel tank cleaned and pressure tested
- Rudder removed and reinstalled

2003

- New wet exhaust system
- New DC refrigeration system
- New propane cabin heater

2002

- New AC panel

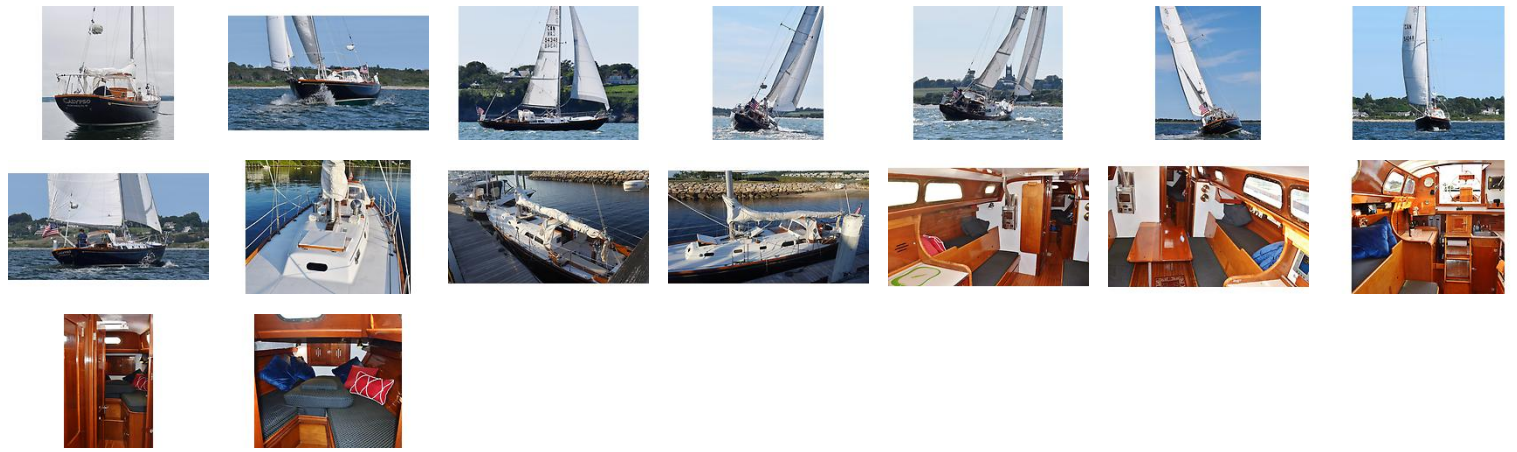
2000

- New standing rigging

Disclaimer

The Company offers the details of this vessel in good faith but cannot guarantee or warrant the accuracy of this information nor warrant the condition of the vessel. A buyer should instruct his agents, or his surveyors, to investigate such details as the buyer desires validated. This vessel is offered subject to prior sale, price change, or withdrawal without notice.

GALLERY



LOCATION MAP



CRAIG SHEARD
Northstar Yacht Sales
One Lagoon Rd
Portsmouth, RI, US
Office: 401-683-9200
Mobile: 617-201-2644
craig.sheard@northstaryachtsales.com

