



2000 Beneteau 44 Center Cockpit

Boat Type: Cruiser

Address: Newport, RI, US

Price: \$199,000



OVERVIEW

Designed by Farr Yacht Design, Ltd., the 44CC is constructed to provide all the strength and comfort needed for long distance voyages. The safety of the center cockpit design makes her a great family cruiser. The decor is polished, sea going and comfortable. And the interior has been designed to respond to all your needs, including an enormous owner's suite with separate shower and tub in the adjoining head, a comfortable very well equipped galley for entertaining. The many opening ports and hatches provide excellent lighting and ventilation throughout the yacht. Enjoy the freedom of sailing on this true long-distance cruising yacht!

SPECIFICATIONS

Basic Information

Manufacturer:	Beneteau	Vessel Name:	Vado Pazzo II
Model:	44 Center Cockpit	Boat Type:	Cruiser
Year:	2000	Hull Material:	Fiberglass
Category:	Sail	Hull Type:	
Condition:	Used	Hull Color:	
Location:	Newport, RI, US	Designer:	Farr Yacht Design, Ltd

Flag of Registry:

Dimensions & Weight

Length:	44 ft - 13.41 meter	Draft - max:	5 ft 9 in - 1.75 meter
LOA:	44 ft - 13.41 meter	Bridge Clearance:	59 ft - 17.98 meter
Beam:	14 ft - 4.27 meter	Dry Weight:	-

Engine

Make:	Yanmar	Engine Type:	Inboard
Model:	4JH 3TE	Drive Type:	Direct Drive
Engine(s):	1	Fuel Type:	Diesel
Hours:	650	Horsepower:	76 (Individual), 76 (combined)
Cruise Speed:	8 MPH	Max Speed:	9 MPH
Range:	-	Joystick Control:	No

Tank Capacities

Fuel Tank:	73 gallons - 1 tank(s)	Holding Tank:	34 gallons - 2 tank(s)
Fresh Water Tank:	160 gallons - 1 tank(s)		

Accommodations

Total Cabins:	3	Crew Cabins:	-
Total Berths:	2	Crew Berths:	-
Total Sleeps:	-	Crew Sleeps:	-
Total Heads:	2	Crew Heads:	-
Captains Cabin:	No		

DESCRIPTIONS

Accommodations

The **forward cabin** in this three cabin layout features a V-berth forward which is a large double (6' x 11'), a nice hanging locker, wood hull lining, halogen lamps, reading lights and drawers and lockers beneath the berth. Excellent natural ventilation through opening portholes and hatch.

The **forward portside cabin** has (2) bunks (6' x 8'). The lower bunk has storage space below the bunk. Wood hull lining, padded deckhead lining, a hanging locker, halogen lamps and two reading lights.

The **forward head**, just to starboard, is a one piece molded compartment for waterproofing and easy maintenance, marine toilet, bathroom accessories, wash basin with hot/cold water, shower w/separate sump pump, mirror, cupboard, and opening porthole and hatch provide natural ventilation.

Main Salon: Raised deck salon provides panoramic visibility from the U-shaped settee that also converts to large double, Cherry stained salon table which seats six. There are lockers beneath the settee and a bookcase. To starboard are two captains chairs. The aft chair accommodates the aft facing navigation station which has chart storage, bookshelves and lockers.

The galley is located to starboard and equipped with two stainless steel sinks, cutting board, hot/cold pressure water, salt/fresh water foot pumps, microwave oven, 8 cubic ft. refrigerator/freezer with 2 compartments and 2 compressors, trash bin, sliding vegetable baskets, gimbaled 3 burner stove with oven, exhaust fan, cutlery drawer, extensive lockers, shelves and drawers. To port are two hanging lockers. There are two opening portholes and a hatch.

Moving aft is the surprisingly spacious **owner's stateroom** with an island queen berth (6'7" x 4'11"), with custom handcrafted mattress, dressing table/bureau with mirror, two hanging lockers, stowage space along side of the hull to port and starboard, two steps on either side of the bed for easy access and opening ports. The large aft head has a separate shower stall and tub.

Electrical

Wired for both 110 volt ac and 12 volt dc to separate panels with individual breakers.

- (3) MK-A-4D 200 A/hr AGM batteries (600 A/hr house bank) 2008
- (1) MK-A-4D 200 A/hr AGM battery (200 A/hr engine start) 2008
- Xantrex 2000 watt inverter/100 amp Charger
- Link 10 battery monitoring system
- Kyocera 130 watt solar panel and Blue Sky controller 2008
- Powermax P125 high output alternator

Electronics

Nav Station

Standard Horizon VHF Radio
Raymarine Multiview Display
Raymarine RL 70 GPS/Plotter/Radar

Helm

Standard RAM Mic VHF
Raymarine RL70RC GPS/plotter/radar
Autohelm 6000+ Autopilot
Raymarine ST 60 Wind
Raymarine ST 60 Tridata

Sails & Rigging

Keel Stepped Anodized Aluminum Furling Mast (Z Spars)
Anodized Aluminum Boom
1 X 19 Stainless steel discontinuous rigging
Spinnaker Pole track

Elvstrom Furling Main (2000)
Elvstrom Furling 150% Genoa (2000)
(2) Lewmar 54 CST Primary winches
(1) Lewmar 40 EST Electric winch

Hull & Deck

She features factory teak decks, Beneteau white gel-coat hull with green boot and black ablative bottom paint.

Bow Thruster (2008)

Kato dinghy davits

45# CQR anchor w/300' 5/8" BBB all chain rode

Leroy Sommer 1000w Electric Windlass

Cutter rig/stay sail deck & mast attachment

Profurl genoa furler

S/S boarding ladder

Dual life lines w/ gates

S/S pushpit and pulpit

Additional

New Sanitation hoses and tanks.

Dodger and full cockpit bimini – Eisenglass replace 2010

Bottom Sider custom cockpit cushions 2008

Life jackets

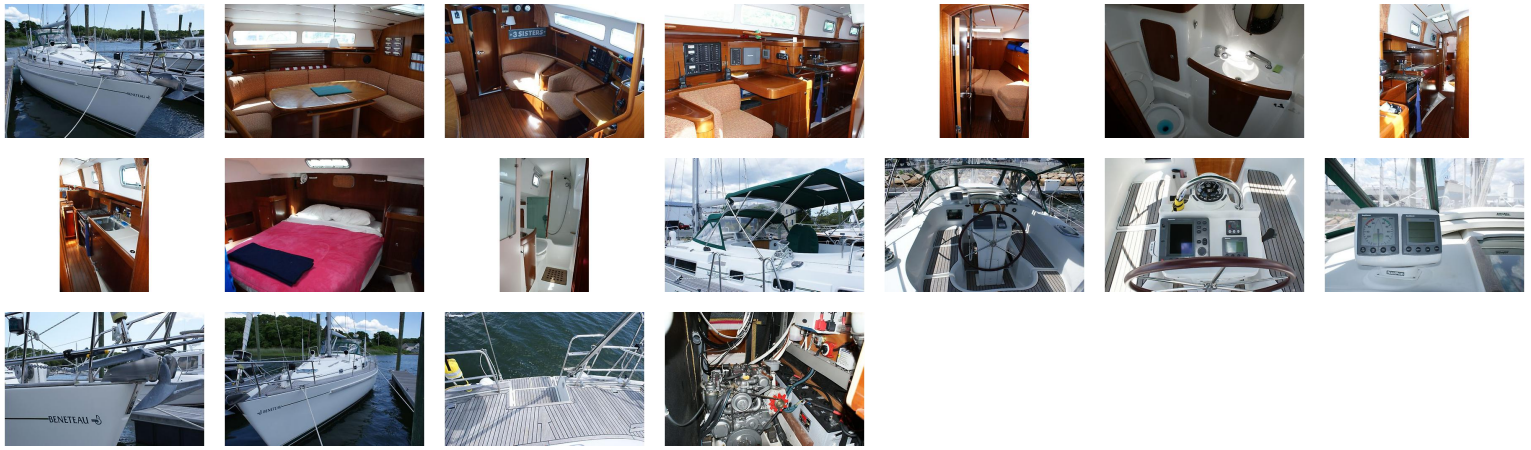
Galvanic isolation system

Thru hull grounding system

Oceanair hatch screens

Dock lines and fenders

GALLERY



LOCATION MAP



JEAN-PIERRE SKOV
Northstar Yacht Sales
One Lagoon Rd
Portsmouth, RI, US
Office: 401-683-9200
Mobile: 401-743-1536
jp@northstaryachtsales.com

